



# Vanilla

Open Source Business Intelligence

Vanilla BI Platform  
New features

Serie 1.30

January 2009  
Vanilla New features for version 1.3  
Patrick Beaucamp  
BPM Conseil  
Contact : [patrick.beaucamp@bpm-conseil.com](mailto:patrick.beaucamp@bpm-conseil.com)



## Index

|                              |   |
|------------------------------|---|
| Introduction.....            | 3 |
| New Features.....            | 4 |
| Enhancement & bug fixed..... | 4 |
| FreeMetadata.....            | 4 |
| BI Portal.....               | 4 |
| Birt Integration.....        | 4 |
| FreeDashboard Designer.....  | 4 |
| FreeAnalysis.....            | 5 |
| Enterprise Services.....     | 5 |
| Architecture.....            | 5 |
| FreeMetrics.....             | 5 |
| BI Scheduler.....            | 5 |
| New Packages.....            | 6 |
| BI Profiler .....            | 6 |
| BI Launcher.....             | 6 |
| BI Workflow Designer.....    | 6 |
| New Packages.....            | 7 |
| BI Profiler.....             | 7 |
| BI Workflow Designer.....    | 8 |



## Introduction

Vanilla is the Open Source Platform launched and sponsored by BPM-Conseil

Vanilla provides an integrated & secured environment to develop, deploy, admin and share BI documents.

Document [BPM Vanilla Presentation User EN.PDF](#) provides informations on each kind of BI documents available with Vanilla platform (reports , Olap views, dashboard, KPI and maps) and informations on functions available to manage and share BI documents from the portal.

Document [BPM Vanilla Presentation Developer EN.PDF](#) provides informations on each development package, deployment & admin packages available to BI developers and BI administrators

Current document contains new features for Vanilla version 1.30



## New Features

### *Enhancement & bug fixed*

#### FreeMetadata

- Bug fixed for Oracle outer join
- enhanced SQL syntaxes for 'group by', 'order by', ...

#### BI Portal

- Business hierarchy is available to manage bi documents
- workbook management, using any kind of BI document (PDF format)
- possibility to launch a document in a new tab
- « user preferences » for each user, to manage each session
- possibility to write notes in front of an open document (using « open report in a new tab » feature)

#### Birt Integration

- Birt 2.3 support (PlugIn) to create and deploy BIRT report based on FreeMetadata secured documents (Birt Viewer 2.3 deployed with Vanilla)

#### FreeDashboard Designer

- Dashboards are dynamically secured if they are built using FreeMetadata secure documents
- multiples Drill Support between FusionChart components
- Drill from Dashlet to BIRT reports (for analysis)
- URL Encoding to access an external report/document.
- OpenFlashChart native support



## **FreeAnalysis**

- multiples drill from Web Olap viewer to BIRT analysis report

## **Enterprise Services**

- New perspective to manage SaaS repositories & engines/servers
- New logon interface to manage repositories & licences keys

## **Architecture**

- Version number has been standardised using version 1.3x.y
- CAS authentication support for Vanilla platform
- Password are stored using MD5 encryption function
- configuration files are localised in a single folder
- support for remote URL call (portal integration)
- unicode support (UTF8 database)
- Installers for each package

## **FreeMetrics**

- Full package available
- Numerous enhancement for Designer & Loader packages

## **BI Scheduler**

- Possibility to schedule « BI Profiler » tasks
- Enhanced Web interface to allow user to schedule report



## ***New Packages***

### **BI Profiler**

New package to manage data analysis scenarios & data quality tests using FreeMetadata documents

### **BI Launcher**

New package to run the Vanilla design & Admin packages from a central interface

### **BI Workflow Designer**

New package to create and manage process, using Bonita workflow engine, that allow the design of workflow for data integration, data validation, data delivery



## New Packages

### **BI Profiler**

Vanilla platform provides a component to create profiling & data quality on data mapped in a FreeMetadata document. Profiling is a process useful to analyse values for objects, and data quality allows the creation of events for objects values.

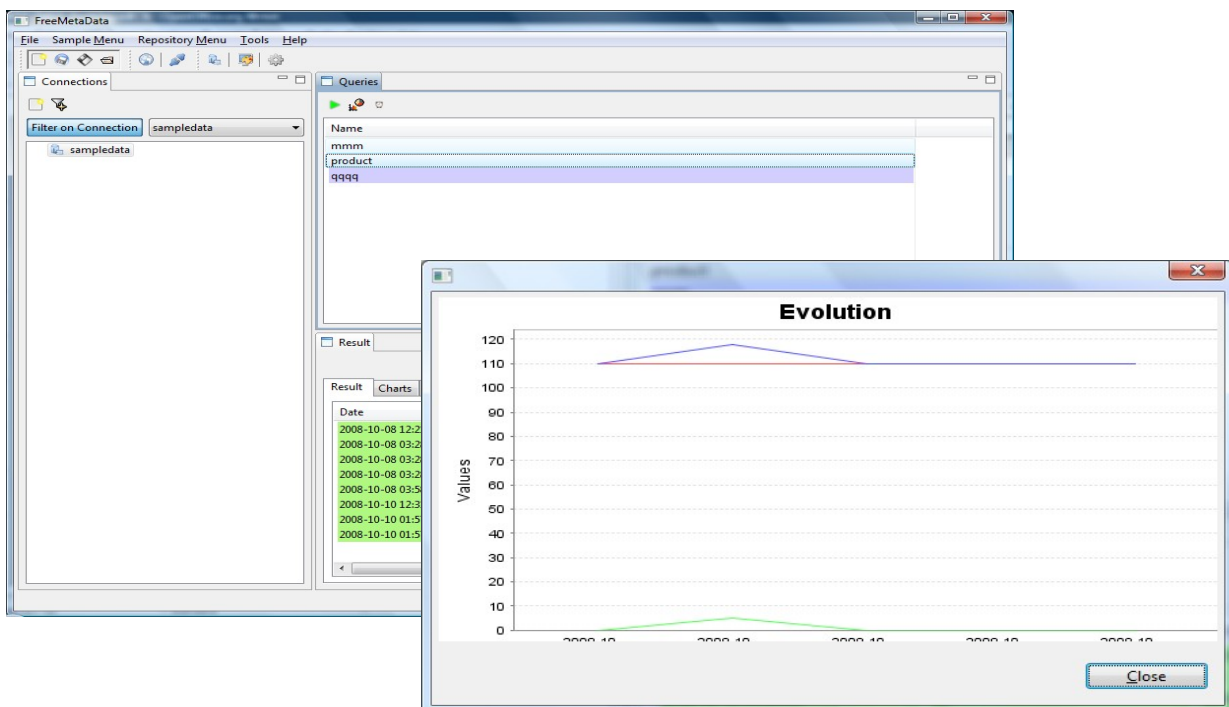
Creation of a data analysis is a 3 steps process :

- Conditions definition : developer creates conditions at column level, using objects from Metadata documents (object is generally database tables).
- Request definition : a request is a combination of one to many conditions and the application of this condition to a type of counter
- Combination of condition and counter function on the condition is the minimum to create a request. SQL request and process result history are available from the interface to view request's result over the time

BI Profiler allows :

- to run requests in real time the requests, and access to analysis graphs, which gives an instant information on the values available in database.
- To access to an interface to publish requests in BIScheduler, an interface that allows to schedule request execution in an agenda.

### Interface to create requests and manage requests's result



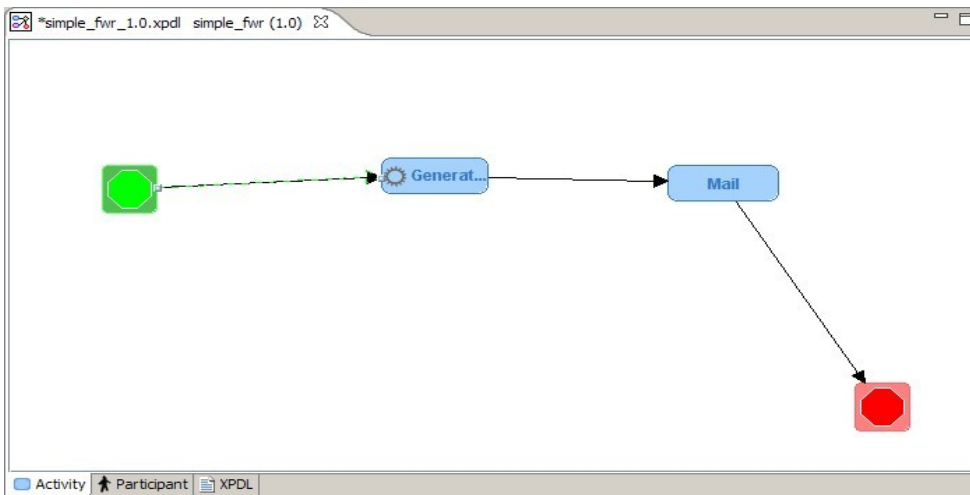


## **BI Workflow Designer**

Vanilla platform provides an interface to create & manage process, « BI Workflow Designer», built on Bonita engine. Administrator can define a workflow to manipulate data & objects, using a single unified interface that aggregate all the BI objects available in a Vanilla repository.

By publishing from the BI Workflow Designer to the Bonita repository (XPDL language), process expert can define complex conditions (manual validation of process, validation of process by a user). A standard Web Bonita console allows to view process status, and apply standard management functions on process (suspend, stop, start, resume, run, cancel, postpone).

### Interface to create a process (mail creation & report sent by mail)



### Bonita Web Interface to manage process

| Field              | Value                              |
|--------------------|------------------------------------|
| repositoryLogin    | system                             |
| email              | patrick.beaucamp@bpm-conseil.com   |
| repositoryPassword | system                             |
| directoryItemId    | 31                                 |
| fileName           | fileName                           |
| repositoryUrl      | http://localhost:9090/BIRepository |